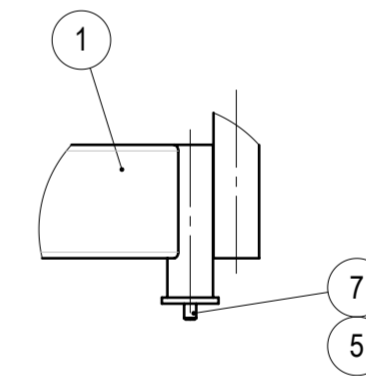
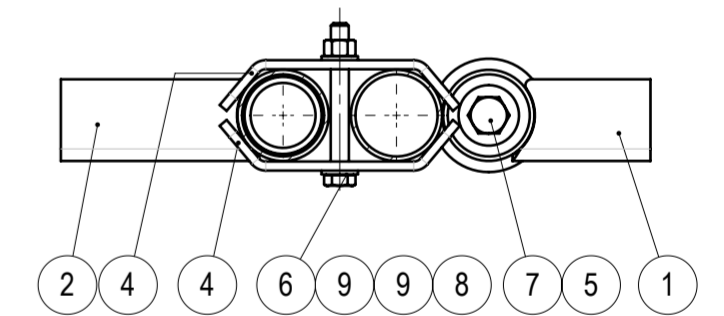


A
SCALE: 1 : 10



B-B
SCALE: 1 : 5



| NO. | PART NO | DESCRIPTION | MATERIAL | PROCESSING | REVISION | WEIGHT | QTY |
|-----|--------------------------|---------------------------------|-----------|------------|----------|--------|-----|
| 1 | 105-80110-00 | Ship Railing section 1 weldment | - | WLD PNT | | 36.89 | 1 |
| 2 | 105-80120-00 | Ship Railing section 2 weldment | - | WLD PNT | | 33.09 | 4 |
| 3 | 105-80130-00 | Ship Railing section 3 weldment | - | WLD PNT | | 31.68 | 1 |
| 4 | 105-80100-01 | Connector plate | S355 | LCB PNT | | 0.41 | 20 |
| 5 | DIN7349 M16 | Thick washer | HDG-HV200 | COTS | | 0.05 | 7 |
| 6 | ISO4014 (DIN931) M12x100 | Hex bolt with shank | HDG-8.8 | COTS | | 0.10 | 10 |
| 7 | ISO4017 (DIN933) M16x35 | Hex bolt | HDG-8.8 | COTS | | 0.09 | 7 |
| 8 | ISO4032 (DIN934) M12 | Hex nut | HDG-8 | COTS | | 0.02 | 10 |
| 9 | ISO7089 (DIN125) M12 | Plain Washer | HDG-HV200 | COTS | | 0.01 | 20 |

| | | | | | | |
|--|--|-----------------------|-------------|------------------------------|--------------|------------|
| | | MATERIAL | WEIGHT | DEBURR AND BREAK SHARP EDGES | REVISION | DATE |
| | | - | 211.402 Kg | DO NOT SCALE DRAWING | | 02.07.2025 |
| Designed by D. Dislers Drawn by D. Dislers Technical ref | | SURFACE PROTECTION | MACHINING | THERMAL CUTTING | WELDING | SCALE |
| | | - | ISO 2768 mK | ISO 9013 221 | ISO 13920 BF | 1:20 |
| NAME | | SIGNATURE | PART NO. | 105-80100-00 | | |
| DESCRIPTION | | Ship Railing assembly | | SHEET 1/1 | | |